

*Proudly presenting*

# **DHA GANDHARA**

## **LAKE DISTRICT ISLAMABAD**

---



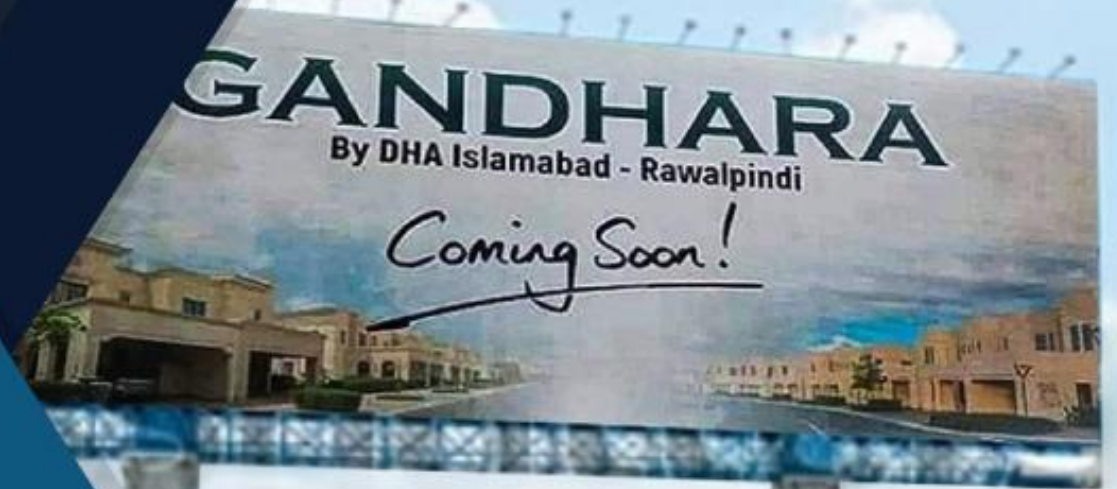
**A PROJECT BY DHA**

# Introducing DHA Gandhara LAKE DISTRICT

---



**Power Alliance for  
Exclusive Sale**





# DHA Gandhara

DHA Gandhara Islamabad is a landmark residential and commercial development launched under the prestigious umbrella of DHA Islamabad-Rawalpindi. Strategically located near the M-2 Motorway, Islamabad International Airport, and Capital Smart City.

DHA Gandhara offers exceptional accessibility and investment potential. Starting over 32,000 Kanal, the project is master-planned with modern infrastructure, wide roads, parks, schools, healthcare, and commercial zones — all designed for a premium lifestyle.

NEW DEVELOPMENTS IN ISLAMABAD





*Why?*

# DHA Gandhara

- Best Location Near New Islamabad International airport
- A complete new City near Capital - Islamabad
- DHA itself A Trusted name in Pakistan
- World class amenities
- High Capital appreciation
- Modern infrastructure
- Planned by Surbana Jurong
- Rising demand of Premium Lifestyle
- Long term Growth Potential
- Safe & Secure Investment
- Natural Beauty & Lush Green Surroundings



# DEVELOPER

## OF DHA GANDHARA LAKE CITY

**Habib Rafiq (Pvt.) Ltd. (HRL)** is one of Pakistan's most renowned and respected infrastructure development companies, with a legacy spanning **over 60 years**. Known for its engineering excellence, commitment to quality, and timely delivery, HRL has been the backbone of many iconic real estate and infrastructure projects across Pakistan and the Middle East.

As the official development partner of **DHA Gandhara**, HRL brings unmatched expertise in land development, road networks, utilities, and smart infrastructure. The company has delivered successful projects such as **Capital Smart City, Lahore Smart City, Royal Orchard**, and has played a pivotal role in the execution of various **DHA and Bahria Town** developments.

HRL's involvement in DHA Gandhara ensures that the project will be built on strong foundations of quality, transparency, and long-term reliability — further enhancing investor confidence and market value.

ABOUT  
**HRL**

HABIB RAFIQ  
ENGINEERING (PVT.) LIMITED

“

**TRANSFORMING  
VISIONS INTO REALITY**



# MASTER PLANNER

## OF DHA GANDHARA LAKE DISTRICT

**Surbana Jurong** is a global urban, infrastructure, and managed services consulting firm headquartered in **Singapore**. With over **70 years of experience**, it is one of Asia's largest urban and infrastructure planning companies, operating in more than **40 countries with a team of over 16,000 professionals**, including architects, engineers, planners, and sustainability experts.

Renowned for its expertise in master planning, smart city design, and large-scale infrastructure projects, Surbana Jurong has led iconic developments across Asia, the Middle East, and Africa. Its portfolio includes national capital plans, economic zones, airports, industrial parks, and high-tech smart cities.

In Pakistan, Surbana Jurong brings its world-class planning expertise to DHA Gandhara Islamabad, ensuring a visionary layout that meets global standards of livability, sustainability, and investment value.

#17

among the world's top  
100 architecture firms

WA  
100  
2025





Location of

# DHA Gandhara

## Location

- Located at M2 Motorway-
- Near Islamabad International airport
- Thalian & Morat Interchange





*Location of*

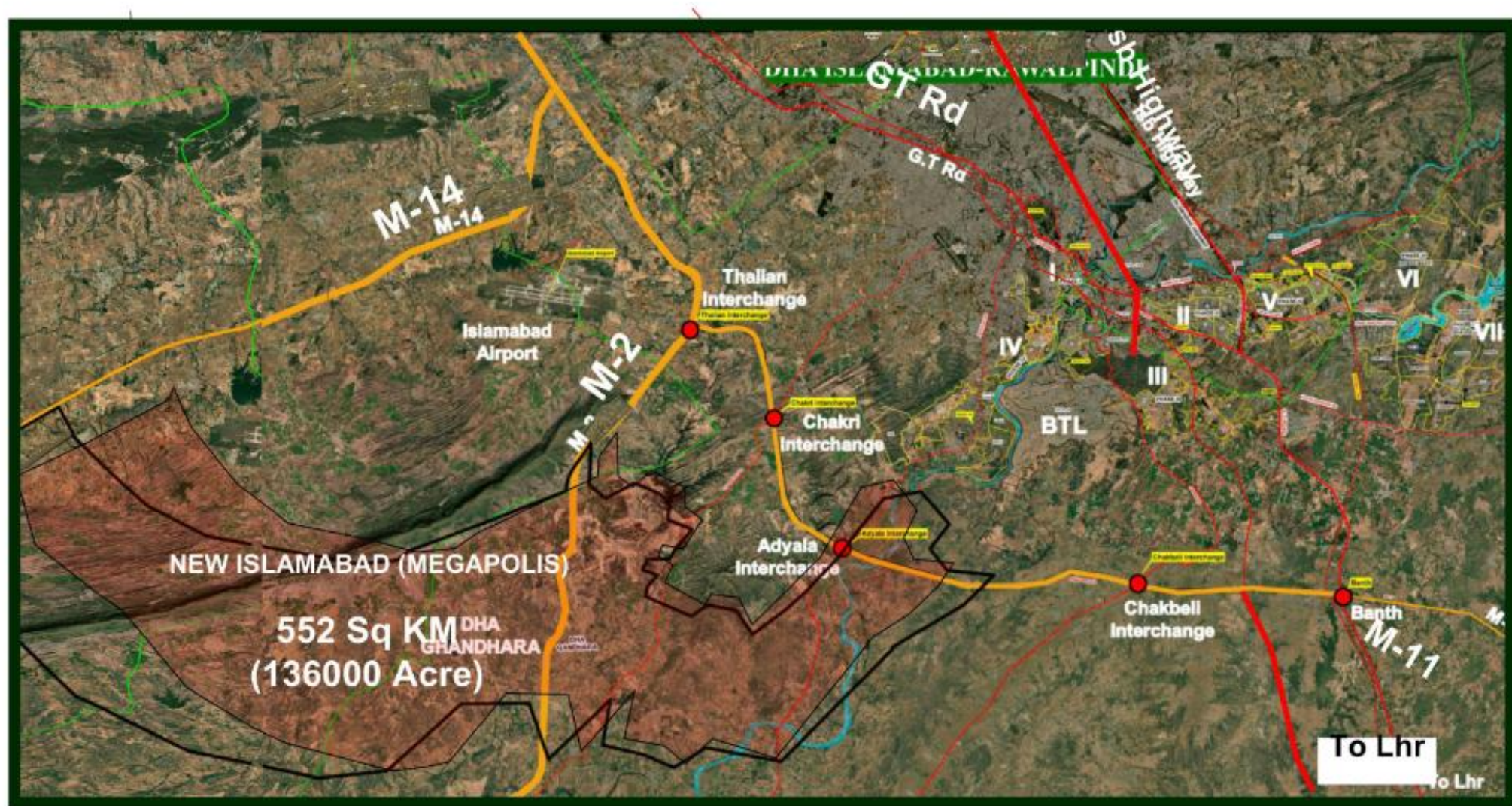
# DHA Gandhara

## Accessibility

- 15 minutes – Srinagar Highway
- 15 minutes – Islamabad International Airport
- 05 minutes – Rawalpindi Ring Road
- 07 minutes – Chakri Interchange



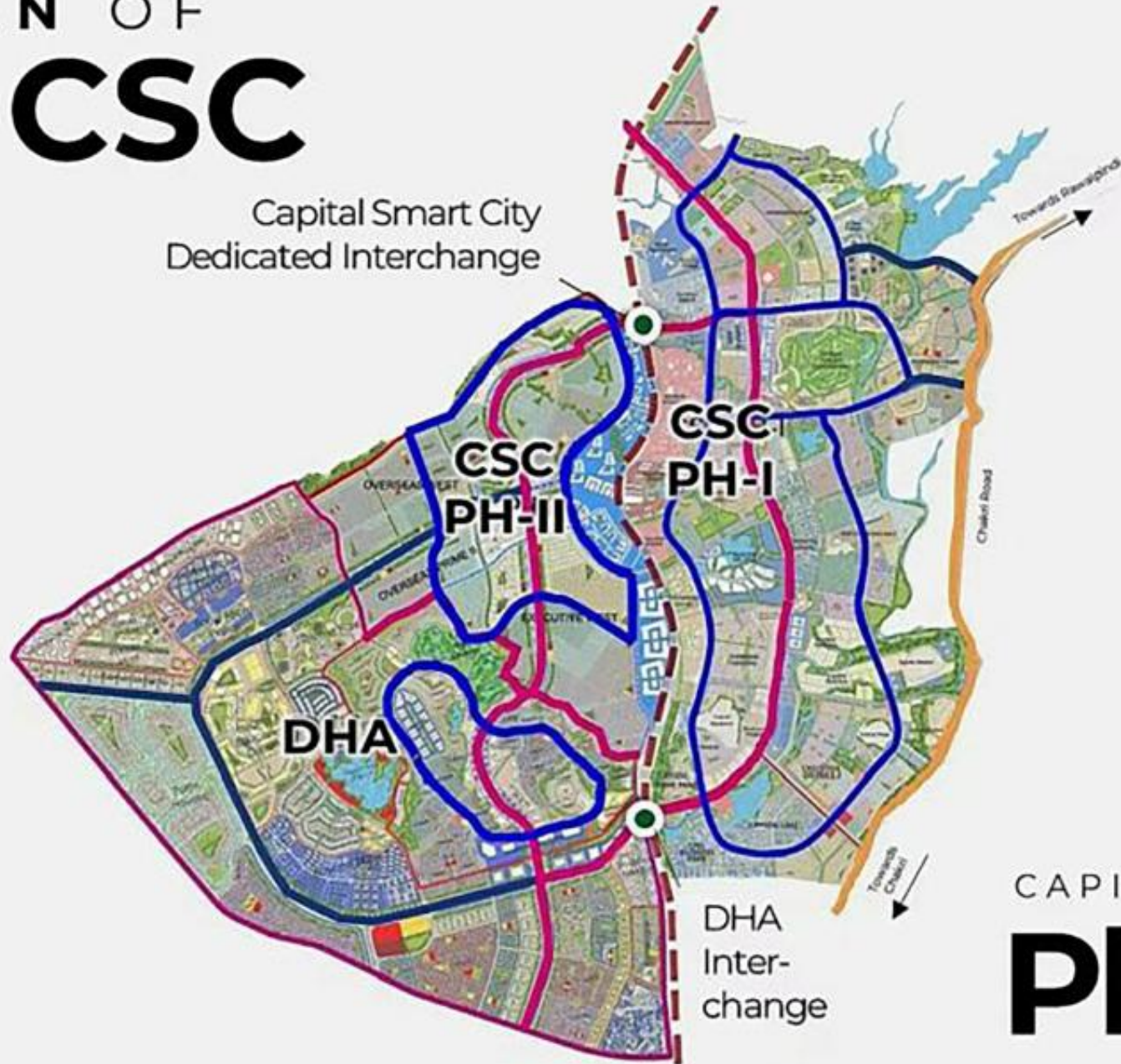
# AREA ORIENTATION



# MASTERPLAN OF DHA & CSC



Capital Smart City  
Dedicated Interchange

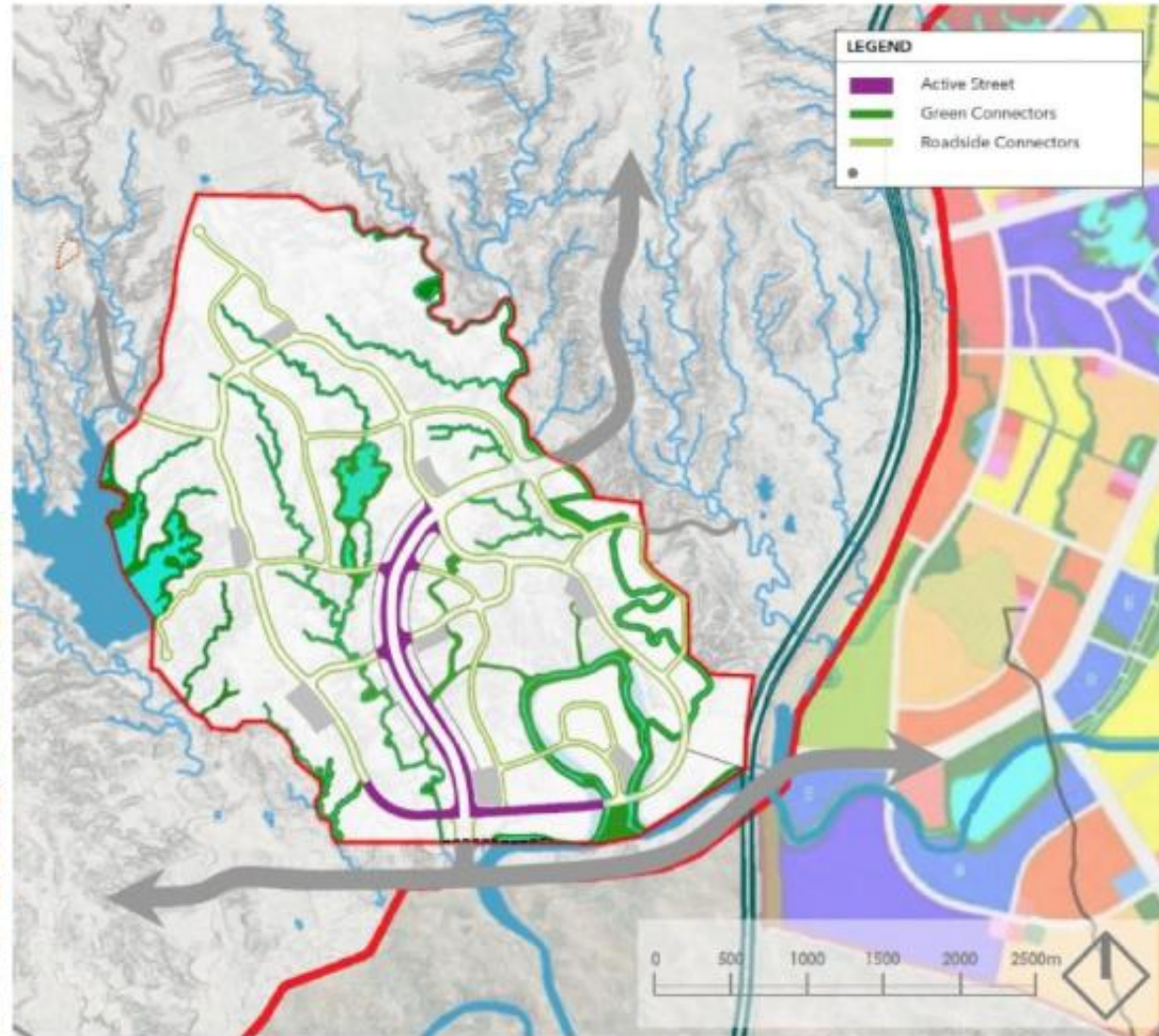


CAPITAL SMART CITY  
**Phase-II**

# DHA CONCEPT PLAN

## PEDESTRIAN NETWORK

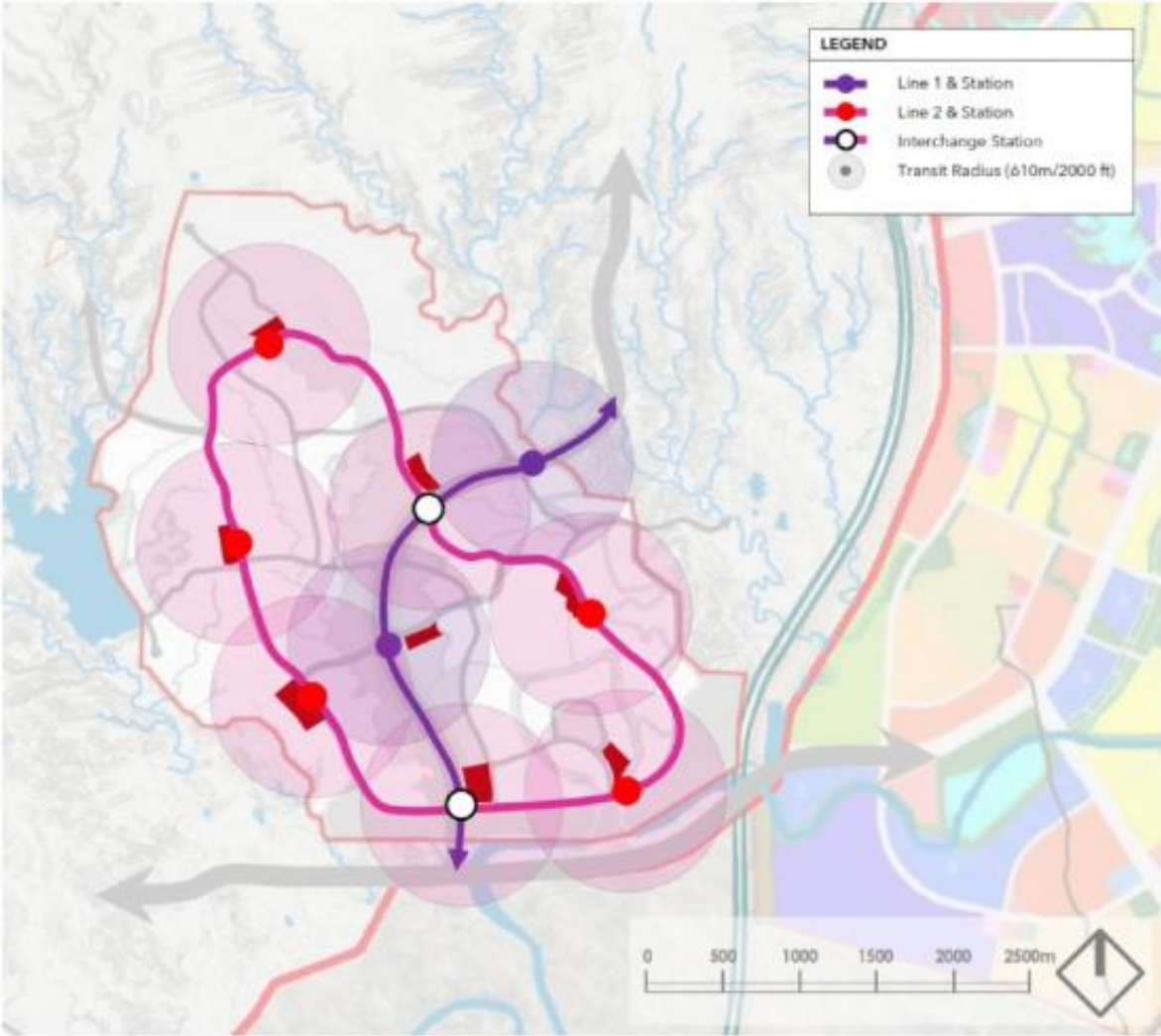
Green connectors and extensive pedestrian network encourages walkability especially for short commutes



# DHA CONCEPT PLAN

## PUBLIC TRANSPORT

Public Transport runs in the middle to each neighborhood and district, providing end to end connections





*Amenities & Lifestyle*

# DHA Gandhara

- 18 Holes Golf course
- Schools
- Education district
- Jogging Trails
- Water front villas
- Lake view apartments
- Hospitals
- Commercial areas
- Sports facilities
- Parks
- Mosques
- Underground wiring, wide roads
- World class theme park





*Amenities & Lifestyle*  
**DHA Gandhara**

## CENAURUS THEME PARK



## *JOIN OUR COMMUNITY*

At Centaurus Theme Park, DHA-Gandhara, we believe in creating lasting connections. Our vibrant community welcomes guests from all walks of life. Engage with us on social media for exclusive updates, contests, and behind-the-scenes content that keeps the excitement alive even when you're not here.





*Amenities & Lifestyle*

# **DHA Gandhara**

Biggest Cricket Stadium of Pakistan- JV with





*Amenities & Lifestyle*

# DHA Gandhara

## Largest Stadium & Sports Complex

**MOU with PCB**



DHA Gandhara is set to become home to Pakistan's largest cricket stadium, following a landmark Memorandum of Understanding (MOU) signed with the Pakistan Cricket Board (PCB).



*Amenities & Lifestyle*

# DHA Gandhara

## 18 Holes Golf Course

A Symbol of Prestige and Lifestyle

An 18-hole golf course is the hallmark of luxury living and international-standard development. Spanning across vast green landscapes, it offers a perfect blend of recreation, natural beauty, and elite social engagement.



Over 250 Acres



# TYOLOGIES - RESIDENTIALS

## CANALFRONT RESIDENCES

- Condominiums
- Hotels & Service Apartments
- Waterfront Plaza & Parks
- Shopping Complex
- Al-Fresco Dining & Retail
- Water Activities
- Lifestyle Hub
- Sports/ Jogging Trail



# TYPOLOGIES - RESIDENTIALS

## GOLF RESIDENCES

- CLUBHOUSE ON THE HILL
- Wedding Hall
- Gated & Guarded Community
- 18 Holes Exclusive Golf Courses
- Villas & Townhouses
- Bungalows
- Shopping Village
- International/Private Educational Facilities
- SPA/GYM – Relaxation Centre
- Community Center
- Sports & Recreation Complex
- Sports/ Jogging Trail



LARGE VILLAS, CANAL, GOLF COURSE



CLUBHOUSE FACILITIES ON THE HILL



# TYOLOGIES - RESIDENTIALS

## HILL RESIDENCES

- Condominiums
- Terrace Houses
- Semi-Detached Homes
- Affordable Housing
- Local Markets
- Sports/Jogging Trail
- Clubhouse
- Schools and Clinics
- Community Center
- Sports/Jogging Trail



# TYOLOGIES – COMMERCIAL

## RETAIL STREETS

- Hotels & Service Apartments
- Corporate offices
- Green Spaces & Plazas
- Shopping Complex
- Business Park
- R&D / Innovation Hub
- City Landmark
- Gateway Monument
- Visitor Information Center



# TYOLOGIES – COMMERCIAL

## GATEWAY – BUSINESS DISTRICT

- Hotels & Service Apartments
- Corporate offices
- Green Spaces & Plazas
- Shopping Complex
- Business Park
- R&D / Innovation Hub
- City Landmark
- Gateway Monument
- Visitor Information Center



# TYOLOGIES – FACILITIES

## SPORTS COMPLEX AND EDUCATIONAL INSTITUTIONS

- Educational Centre/  
Vocational School
- University /  
College
- School  
Dormitory
- Sports/Joggin  
g Trall
- Stadium &  
Event Area
- Sports &  
Recreation  
Complex



Sports Complex



University & College

# TYOLOGIES – RESIDENTIALS

## WATERFRONT APARTMENTS

- Condominiums
- Hotels & Service Apartments
- Waterfront Plaza & Parks
- Shopping Complex
- Al-Fresco Dining & Retail
- Water Activities
- Lifestyle Hub
- Sports/ Jogging Trail





*Expected Launching*

# DHA Gandhara

The official launch of DHA Gandhara Islamabad is highly anticipated within the real estate and investment community.

With groundwork already in motion and strategic planning completed by **Surbana Jurong**, the project is expected to formally launch **in the coming months** under the supervision of DHA Islamabad-Rawalpindi.

The launch will unveil detailed master plans, sector allocations, and a full-scale marketing campaign.





*Pre Launch Price*

# DHA Gandhara

Pre-Launch Price – 1 Kanal Residential Plot  
DHA Gandhara is currently offering a limited inventory of 1 Kanal residential plots at an attractive pre-launch price of PKR 74.50 Lac.

This introductory rate provides early investors with a rare opportunity to secure premium land in one of the most strategically located and master-planned developments near Islamabad.

## 1 Kanal Plot

PRICE STARTS AT

**PKR 74.5 LACS**

### FEATURES

- ✓ Saleable
- ✓ Transferrable
- ✓ Just 74.5 Lacs



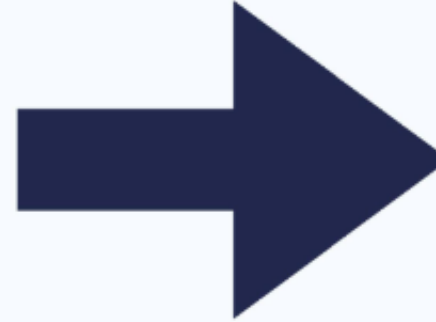
Booking Procedure

# DHA Gandhara

Complete  
Application  
& Docs

Payment  
Deposit

DHA Office  
Submission  
& receipt



**COLLECT YOUR ALLOTMENT  
FROM DHA ON GIVEN TIME**

**Required Documents with application:**

- 1- Applicant CNIC copy
- 2- Nominee CNIC copy
- 3- 2 Passport size Pictures of Applicant
- 4- Singed DHA membership form